

# HISTORY OF THE HOSPITAL



- The development of the “Old Site”
- Moral Treatment Era in Psychiatry
- WSH population “BOOM”
- OT and TR’s Beginnings
- Development of the “New Site”
- De-institutionalization and medications
- The New – New Site

# Mission Statements

## WSH and PSR



Our mission is to provide safe and effective individualized treatment in a recovery oriented environment.

To assist people with long-term psychiatric disabilities by increasing their functioning so that they are successful and satisfied in the environments of their choice with the least amount of ongoing professional intervention.

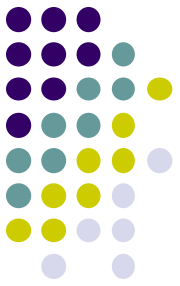
# Misconceptions



# HISTORY OF REHAB SERVICES DEPARTMENT



- No longer on the ward
- Psychosocial Rehabilitation - the “Mall”
  - Harvest Mall
  - Webb Mall
  - Barber Mall
  - First Step Mall
- Interdisciplinary crew



# PRS Program Today

- Ward Name Change to Units
- Psychosocial Rehabilitation - the “Mall” – name change to Learning Centers
  - Harvest Learning Center
  - Webb Learning Center
  - First Step Learning Center
  - Commons area
- Classes continue to be run Interdisciplinary

# Stribling Court Yard



# POPULATION SERVED



- Catchment Areas – west of rt. 29
- Demographics of patients
  - Age: 18-65
  - Largely schizophrenia and bi-polar
  - 40% Forensic
  - Variety of ethnicities
- Patients with hearing impairment from all over the state

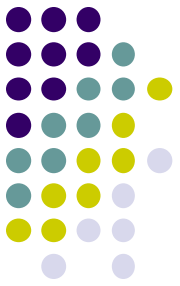
# SAFETY



- Interpersonal relationships with patients
- Appropriate dress
- Familiarization with fire safety and infection control procedures
- Safe keeping of personal belongings
- Control of sharps
- Alert evening staff when you are in building



# KEYS AND SECURITY

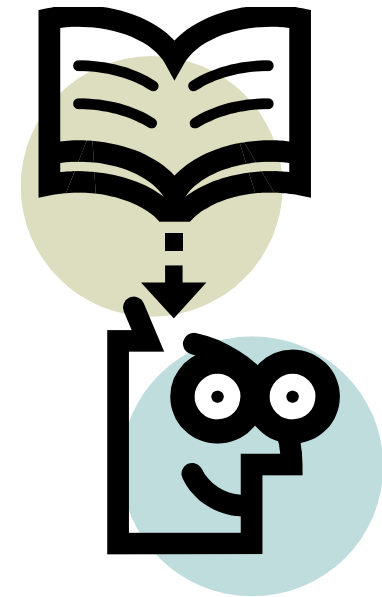


- Knowledge of hospital badges and keys
- Security of areas
- Use of security personnel
- Review of traffic/parking rules

# DOCUMENTATION



- Behavior Oriented Notes
- Initial Screening Assessment
- Specialized Assessments
- Confidentiality issues
- HIPAA Review
- One Mind Electronic Record

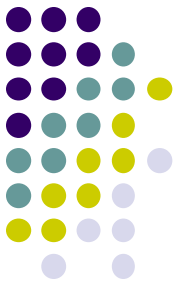




# Privileges Levels

- Level R – Can not leave the building
- Level 2 – Requires escort to leave building
- Level 3 – Limited Ground Privileges
- Level 4 – Full Ground Privileges
- Level 5 – Can go off grounds 1on 1 with staff
- Level 6 – Can go off grounds with group
- Level 7 – Can go off grounds individually

# PRIVILEGE LEVEL AND FORENSIC ISSUES



- Privilege vs. token economy systems
- Rationale for privilege levels
- Gray charts
- Forensic Review Panel
- Importance of ensuring proper level before taking patients off of a ward

# STAFFING



- Organization of treatment teams
- Roles of other disciplines
- Staffing within Rehab Services
- Future plans
- Importance of affiliates - the learning vs the doing
- Recruitment issues